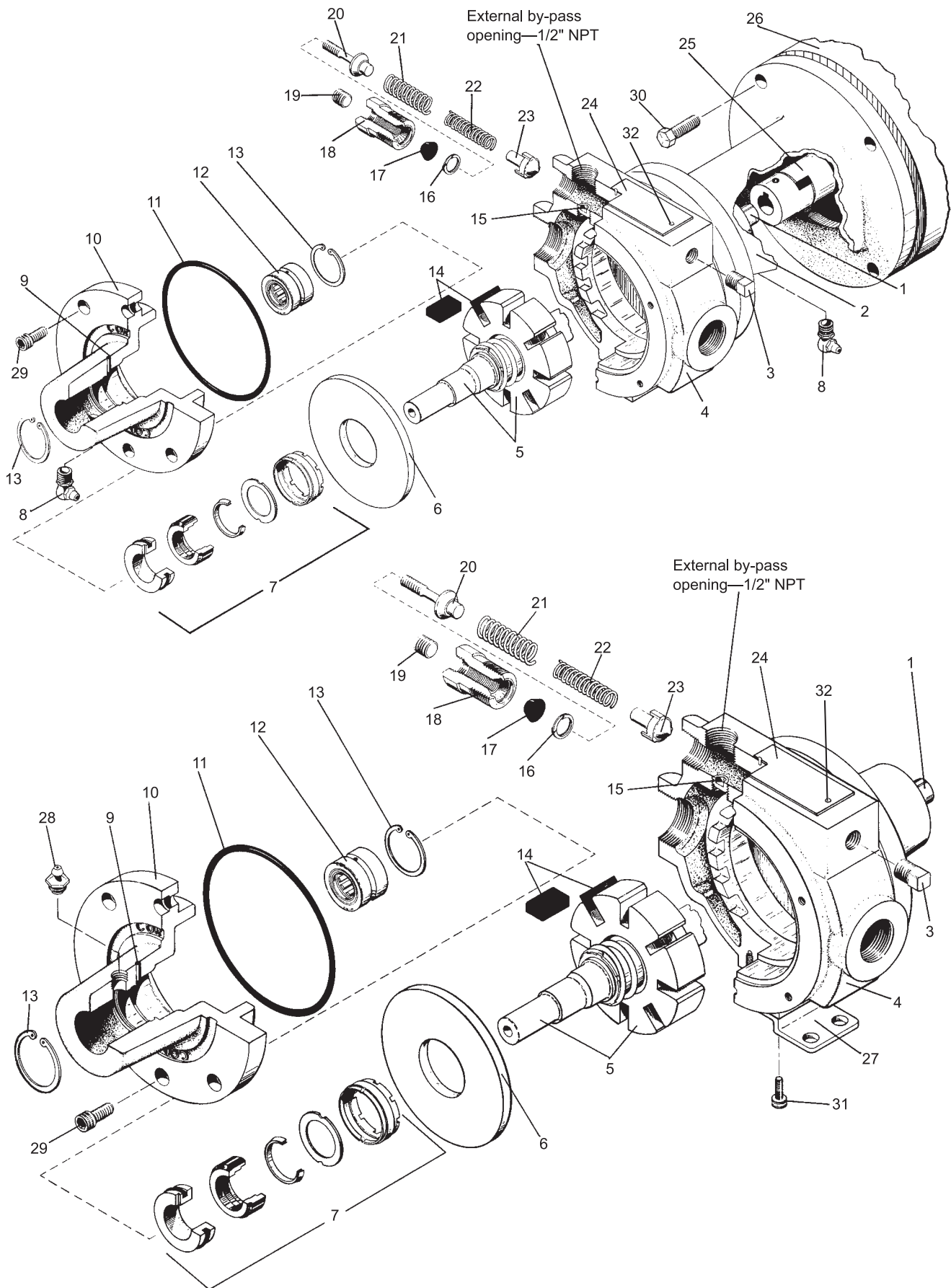


# Appendix E—Parts Details For Stationary Coro-Vane® Pumps Models C51, D51 and F51



# Appendix E—Parts Details For Stationary Coro-Vane® Pumps Models C51, D51 and F51



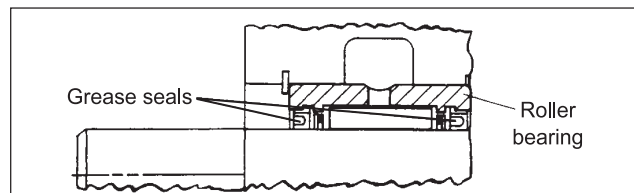
**CAUTION:** Always relieve pressure in the unit before attempting any repairs.

Ref. No.	Part No.	Description	Qty	Ref. No.	Part No.	Description	Qty
1	2592	Key 1/8" sq. x 9/16"	1	18	2585	Relief valve plug	1
2	2510	Mounting bracket (mod. C51)	1	19	2590	Flush seal plug 1/8" NPT	1
3	3442	Pipe plug 1/4" NPT	1	20	2584-X	Adjusting stem assembly	1
4	2468	Case (model C51)	1	21	2587 <sup>2</sup>	Outer relief valve spring	1
	2468-1	Case (model F51)	1	22	2586 <sup>2</sup>	Inner relief valve spring	1
5	2492-X	Rotor & shaft assembly	1	23	2588	Relief valve	1
6	2491	Sideplate	2	24	2591	nameplate	1
7	2296-1X_1	Seal assembly	2	25	2593-1	Coupling with spider (C51)	1
8	2604	Elbow grease zerk 1/8" NPT (model C51)	2		2774	Coupling spider only (C51)	1
	2159	Lubricap #2 (not shown)	2	26	2767	1/2 hp 50/60 Hz motor (C51)	1
9	2595	Seat location pin	2	27	2594	Base (model F51)	1
10	2472	Head	2	28	2158	Grease zerk 1/8" NPT (F51)	2
11	2-154_1	Case O-ring	2		2159	Lubricap #2 (not shown)	2
12	2471 <sup>3</sup>	Roller bearing	2	29	7002-025 NC062A	Bolt soc head (model C51)	9
13	5000-112	Retainer ring	4		7002-025 NC062A	Bolt soc head (model F51)	12
14	2451-2	Carbon vane	8	30	7001-037 NC100A	Bolt hex head	4
15	2590 <sup>2</sup>	Flush seal plug 1/8" NPT	1	31	7002-010 NC050A	Bolt soc head	3
16	2760-53	Retainer ring	1	32	7012-006 SF019E	Nameplate screw	2
17	2589	Stem seal	1				

<sup>1</sup>\_ denotes O-ring code

O-ring Code	
A	Buna-N
B	Neoprene <sup>®4</sup>
D	Viton <sup>®4</sup>
E	Teflon <sup>®4</sup>

<sup>2</sup>The pump relief valve is installed at the factory to operate as an external bypass through the 1/2" NPT hole back to the storage tank. To change from this external configuration to an internal relief valve, remove relief valve plug 2585 and relief valve springs 2586 and 2587. Then remove flush seal plug 2590 and plug the 1/2" NPT opening. Replace the relief valve plug and springs. In this case a separate external by-pass valve must be used in the piping between the pump discharge and the storage tank. Set the internal valve at a pressure slightly above the steeing on the external valve. Use only the outer relief valve spring 2587 for units with 1/3 hp motors. use both springs for 1/2 hp motors and larger. Always replace the flush seal plug 2590 that screws into the relief valve plug 2585 after any relief valve adjustment.



<sup>3</sup>Bearing replacement: Install roller bearing 2471 with open side of grease seals toward outside of pump as shown below.

<sup>4</sup>Registered trademark of the DuPont company